



ELISA PLATE READER

DESCRIPTION

Elisa Reader
Microplate Reader
Lisa Plus touch and feel the power of software which reads entire 96 wells in just 5 seconds
Fully Automatic
Large LCD display, with touch screen.
96-well plate, multiple tests in the single plate.
West guard Multi-rule, automated QC alert.
Plate shaking, speed and time adjustable.
8 Channel Optic fiber system reads whole plate in 5 seconds
External mouse option
largest 500 parameters and 10000 tests results storage



FEATURES

- Easy Windows operation system with touch screen or mouse, large LCD display.
- B-channel optical fiber system enables 5 secs' reading for the whole plate.
- Bichromatic measurement. calculation modes including ABS, Cut-off, Curve, Linear-Log and Exponential regression.
- Large memory, up to 100 test protocols and 10,000 can be stored.
- Auto self-check when power on .

With lamp sleeping and wake-up function

- Random positive and negative control setting
- Multi-assay enables up to 12 different assays on one plate
- Plate shaking function
- Powerful QC function: Grubs, Westguard
- Multi-rule, Levey jennings plot (optional)
- Easy software upgrade by SO card, support USB mouse & keyboard
- Multifunction result output including patient comprehensive report
- Ability to communicate with PC for data management(optional).



Plate Holder



Touch Screen Display

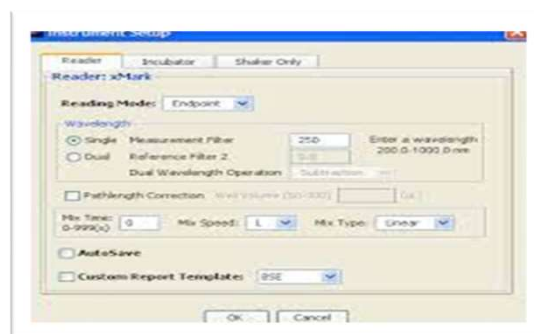
TECHNICAL SPECIFICATION

Model	BS-ER96
Absorbance range	0.000-4.000Abs
Resolution	0.001Abs (display), 0.0001Abs (calculation)
Accuracy	±0.1% or ±0.005Abs (calculation)
Type of microplate	Standard with 96-well or other kind of microplate & strip
Wavelength	405, 450, 492, 630nm, 4 more filters optional (from 400-700nm available on special order)
Optic system	8 channel optic fiber system
Light source	Halogen lamp
Wavelength accuracy	±1nm
Band witch	<8nm
Calculation method	ABS, Cut-off, single standard, curve, multi-percent, percent log, linear, exponential, power, 4PL regression
Reading speed	5 second for 96 well plate (single wavelength)
Shaking plate	Shaking time and speed adjustment
Memory	More than 100 programs, up to 100,000 test results
Interface	RS-232, USB, SD card interface
Display	6" LCD (with touch screen function)
Input	Touch panel or mouse
Output	External printer (optional)
Power supply	AC 110V-220V ±10%, 50/60Hz
Net weight	9kg
Dimensions (mm)	L460xW330xH200

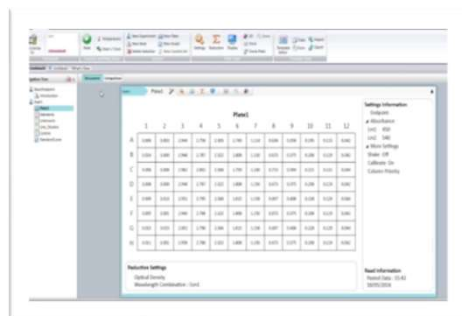
ELISA REDER MENU



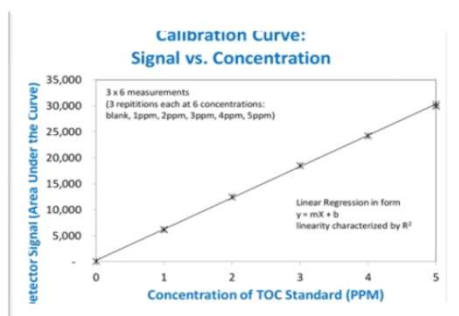
PLATE SETTING



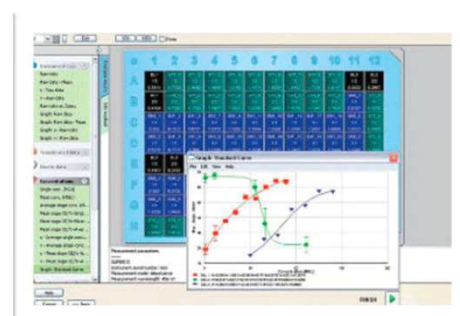
PROGRAMIING



CALIBRATION



DATA SAVING



BIOGENIX SYSTEMS PRIVATE LIMITED

S-10, Pankaj Central Plaza, Pocket-5, Plot no-5,
Sector-12, Dwarka, New Delhi-110075, INDIA

Email: sales@biogenixsystems.com |

Phone: +91-11-43738899 | 9990251155-99 | 9911717057

Website: www.biogenixsystems.com

Dealer Details